

Delta Part No . : SDER041H type

Part Name : Sealed Choke

Sealed Choke Coil SDER041H type

■ Features

Low profile : 4.0mm x 4.0mm x 1.8mm

Low coil resistance with large currents.

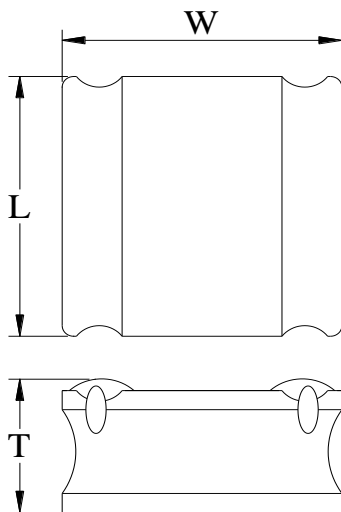
High magnetic shield construction should actualize high resolution for EMC protection.

100% lead (Pb) free meet RoHS standard

■ Application

Cellular phones, LCD displays, HDDs, DVCs, DSCs, PDAs etc..

■ Outline Dimensions



Code	Dimensions (mm)
L	4.0 ± 0.2
W	4.0 ± 0.2
T	1.8 Max

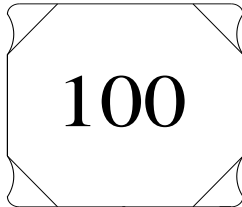
* Dimensions are of the case not including the termination. For maximum overall dimensions including the termination, add 0.1mm.

Note: This graph is in regard to outline dimensions spec. For outer appearance, please refer to actual product.

■ Marking

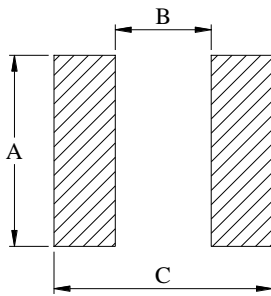
The inductor is marked with a 3-digit code

Example -- $10\mu\text{H}$ → 100



■ Recommend Land Pattern Dimensions

The customer shall determine the land dimensions shown below after confirming and safety.



A	3.6
B	1.8
C	4.1

Unit : mm

■ Specifications

Part Number	L0 Inductance (μH) @ (0A)	R_{dc} ($m\Omega$)		Heat Rating Current DC Amps. I_{dc} (A)		Saturation Current DC Amps. I_{sat} (A)	
		Typical	Maximum	Typical	Maximum	Typical	Maximum
SDER041H-2R2MS	2.2	35	45	3.10	2.80	3.10	2.80
SDER041H-3R3MS	3.3	45	56	2.75	2.50	2.45	2.20
SDER041H-4R7MS	4.7	69	89	2.30	2.07	2.05	1.85
SDER041H-6R8MS	6.8	90	115	2.10	1.90	1.75	1.60
SDER041H-8R2MS	8.2	105	132	1.50	1.35	1.60	1.44
SDER041H-100MS	10.0	134	169	1.50	1.35	1.55	1.40
SDER041H-150MS	15.0	185	222	1.45	1.30	1.10	1.00
SDER041H-220MS	22.0	250	315	1.20	1.08	0.95	0.85
SDER041H-330MS	33.0	405	486	0.90	0.81	0.70	0.63
SDER041H-470MS	47.0	495	594	0.80	0.72	0.58	0.52

* : If you require another part number please contact with us.

** : Inductance Tolerance $\pm 20\%$

Note 1. : All test data is referenced to 25°C ambient.

Note 2. : Test Condition:100KHz, 1.0Vrms

Note 3. : I_{dc} : DC current (A) that will cause an approximate ΔT of 40°C

Note 4. : I_{sat} : DC current (A) that will cause L0 to drop approximately 30%

Note 5. : Operating Temperature Range -55°C to $+125^{\circ}\text{C}$

Note 6. : The part temperature (ambient + temp rise) should not exceed 125°C under the worst case operating conditions. Circuit design, component placement, PCB trace size and thickness, airflow and other cooling provision all affect the part temperature. Part temperature should be verified in the end application.

Note 7. : The rated current as listed is either the saturation current or the heating current depending on which value is lower.