

Delta Part No . : SDET32251E type

Part Name : Sealed Choke

### Sealed Choke Coil SDET32251E type

#### ■ Features

Low profile : 3.2mm x 2.5mm x 1.5mm

Low coil resistance with large currents.

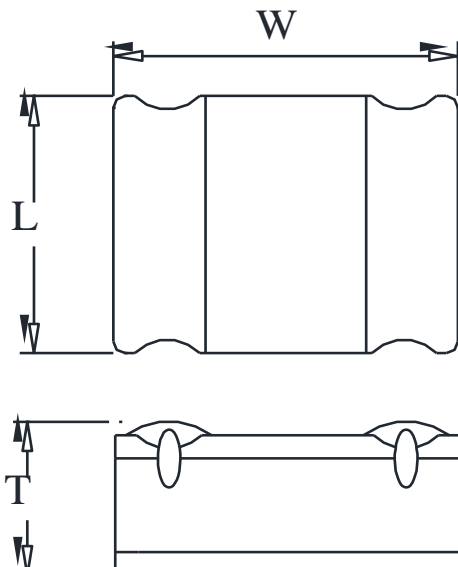
High magnetic shield construction should actualize high resolution for EMC protection.

100% lead (Pb) free meet RoHS standard

#### ■ Application

Cellular phones, LCD displays, HDDs, DVCs, DSCs, PDAs etc..

#### ■ Outline Dimensions

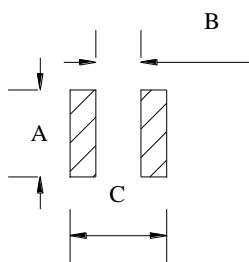


Code	Dimensions (mm)
L	2.5 ± 0.2
W	3.2 ± 0.2
T	1.5 Max.

Note: This graph is in regard to outline dimensions spec. For outer appearance, please refer to actual product.

#### ■ Recommend Land Pattern Dimensions

The customer shall determine the land dimensions shown below after confirming and safety.



A	2.6
B	1.3
C	3.3

Unit : mm

## Specifications

Part Number	L0 Inductance ( $\mu\text{H}$ ) @ (0A)	$R_{dc}$ ( $\text{m}\Omega$ )		Heat Rating Current DC Amps. $I_{dc}$ ( A )		Saturation Current DC Amps. $I_{sat}$ ( A )	
		Typical	Maximum	Typical	Maximum	Typical	Maximum
SDET32251E-4R7MS	4.7	90	108	1.90	1.70	1.30	1.17

\* : If you require another part number please contact with us.

\*\* : Inductance Tolerance  $\pm 20\%$

Note 1. : All test data is referenced to  $25^{\circ}\text{C}$  ambient.

Note 2. : Test Condition:1MHz, 1.0Vrms

Note 3. :  $I_{dc}$  : DC current (A) that will cause an approximate  $\Delta T$  of  $40^{\circ}\text{C}$

Note 4. :  $I_{sat}$  : DC current (A) that will cause L0 to drop approximately 30%

Note 5. : Operating Temperature Range  $-55^{\circ}\text{C}$  to  $+125^{\circ}\text{C}$

Note 6. : The part temperature (ambient + temp rise) should not exceed  $125^{\circ}\text{C}$  under the worst case operating conditions. Circuit design , component placement, PCB trace size and thickness, airflow and other cooling provision all affect the part temperature. Part temperature should be verified in the end application.

Note 7. : The rated current as listed is either the saturation current or the heating current depending on which value is lower.

## Current Characteristic

