



#### Headquarters

186 Ruey Kuang Road, Neihu, Taipei 11491, Taiwan, R.O.C.  
TEL : +886-2-8797-2088  
FAX : +886-2-6606-3308  
Email: LT.Sales@deltaww.com

#### USA

Delta Americas Headquarters  
46101 Fremont Blvd, Fremont, CA 94538, U.S.A.  
TEL : +1-510-668-5100  
FAX : +1-510-668-0680

#### Europe

Delta Electronics Europe  
Zandsteen 15, 2132 MZ Hoofddorp, The Netherlands  
TEL : +31-20-655-0900  
FAX : +31-20-655-0999  
Email: sleu@deltaww.com

#### Australia

ELTA ENERGY SYSTEMS (Australia) PTY LTD  
B46/24-32 Lexington Drive, Bella Vista, NSW 2155, Australia  
TEL : +61-3-8546-3060

## Industrial Lighting

A way to enhance your productivity



# Delta advantages

## Advanced technology

- Power Electronics (World's No.1 power supply provider)
- Computer-Aided Engineering (CAE) method for thermal, structure, and optical design

## Outstanding quality and reliability

- Systematic optimization from design (LED, optics, thermal, structure, and driver) to manufacturing
- Quality assurance for design, material, and manufacturing

## Dedicated sourcing

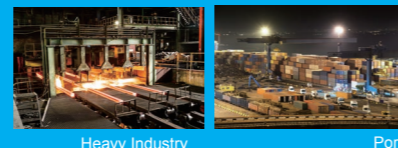
- Own factory with dedicated materials sourcing team

## Worldwide service

- Delta Group has worldwide sales and manufacturing sites
- Lighting simulation services

# Content

## 02 HBD Series



Heavy Industry Port

## 08 SBD/SCD Series



Gymnasium Freezer house

## 14 LCD Series



Factory Warehouse

## 20 PG Series



Freezer house Port

# HBD Series



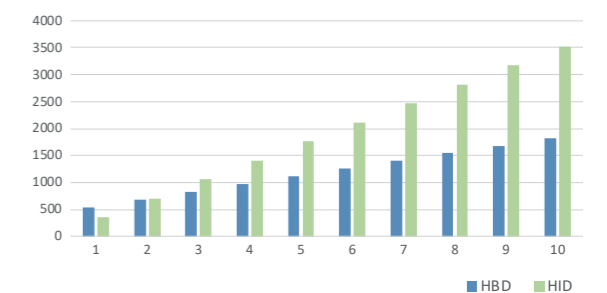
HBD Series High Bay is specially designed for heavy industry applications. To satisfy different customer's needs, it has environmentally robust designs: IP66, 15KV/10KV surge, IK10+ impact strength and anti-vibration as well as a wide operation temperature range (-40°C~75°C) with unique thermal foldback protection. The outstanding design of the HBD Series functions well in severe environments, illuminating different types of areas. Full Mains (120-277 Vac and 347-480 Vac), easy mounting installation and wide output lumen coverage (13Klm~41Klm) meet a variety of customer requirements.



## Payback Comparison

	Delta HBD	HID
Energy consumed by lamp (w)	195	458
Energy cost (\$)	102	248
Energy consumed (kWh)	854	2064
Maintenance cost (\$)	40	105
Cost of ownership (\$)	142	353
Simple payback years (yrs)	1.9	

## System life cycle cost (1-10 years)



## Applications



Freezer house Port Gymnasium Warehouse Heavy industry

# Features and benefits



## Energy efficient

- Efficacy up to 168 LPW
- Lumen output up to 41,000
- Replaces 400W HID and 1000W Mercury



## Leading edge optics and photometry

- Excellent optics design for high spacing criteria (~1.5) as well as better uniformity and illumination
- Wide light pattern collections (25D, 60D, 100D, 65x100D)
- 80 CRI minimum



## Longevity and low maintenance

- IP66 rated and 10KV/5KA surge protection
- Robust structure strength with IK10 impact and 17 Storm wind force
- Nichia LED with L80B10 > 100,000 hours
- Worldwide certifications ((UL (DLC), ENEC, CE, PSE, TISI, RCM (VEET& IPART), BSMI)



## Suitable for severe environments

- Operation temperature range from -40°C to 60°C (75°C), no power declination
- Anti-Corrosion: For chemical plant, mining and ocean areas
- Anti-vibration: Passes IC60068-2-6 5G test
- Fire hazard protection: D-rating certificate and UL 5VA design with advanced thermal foldback protection
- Supports universal mains (120-277Vac & 347-480Vac)

# Unique structure design



Unique screw for waterproofing and anti-vibration

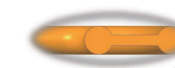
High stiffness plate to prevent stress concentration



Optimized LED PC lens design for better lux uniformity



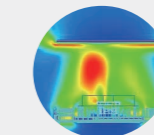
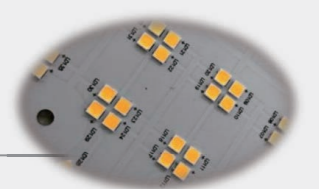
Enhanced sealing by special double layer rubber design



Easy assembly by plug-in connector



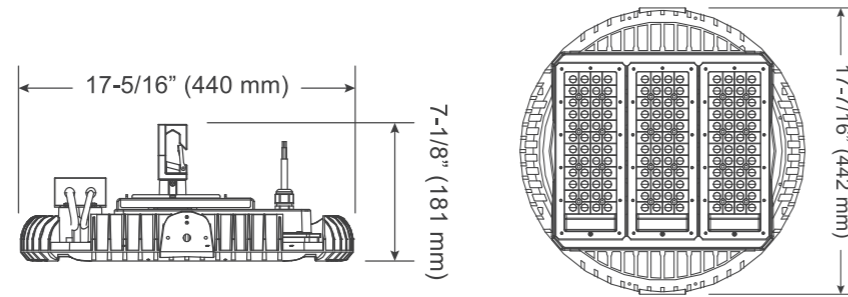
PCB/LED modularized design



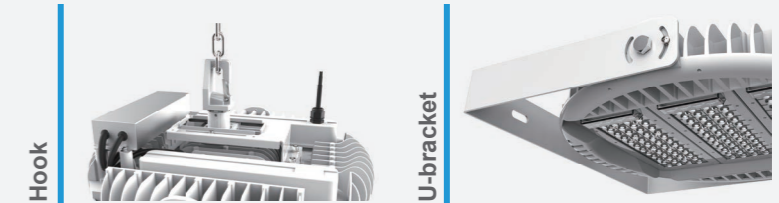
Advanced thermal design with anti-corrosion LM6 (<0.1% Cu)



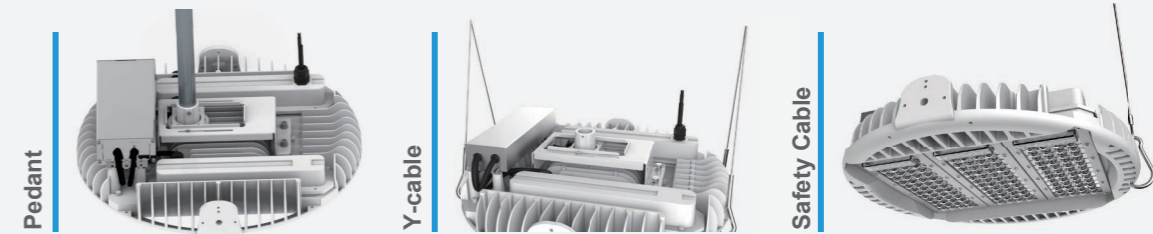
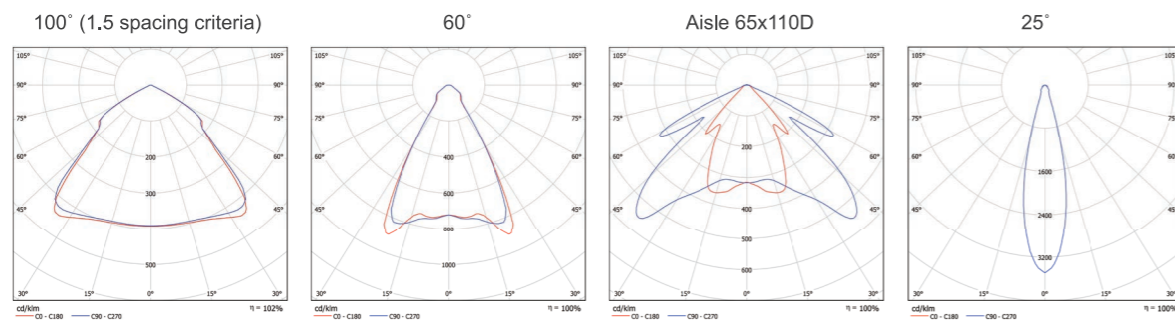
## ► Dimensions



## ► Mounting



## ► Light Patterns



## ► Ordering Information

Model Name	Power (W)	Input Voltage	CCT(K)	CRI (Ra)	Beam Angle	Lumen Output	Efficacy (lm/W)
HBDB85H00x	85	120-277 Vac	5000	>80	100°	13,000 lm	152
HBDBD5H00x	125	120-277 Vac	5000	>80	100°	19,700 lm	158
HBDBF5H00x	155	120-277 Vac	5000	>80	100°	18,200 lm	117
HBDBJ5H00x	195	120-277 Vac	5000	>80	100°	26,300 lm	135
HBDBG5H00x	150	120-277 Vac	5000	>80	100°	24,800 lm	165
HBDBH5H00x	170	120-277 Vac	5000	>80	100°	26,900 lm	158
HBDBI5H00xH	180	347-480 Vac	5000	>80	100°	26,900 lm	150
HBDBL5H00x	200	120-277 Vac	5000	>80	100°	31,000 lm	155
HBDBN5H00xH	210	347-480 Vac	5000	>80	100°	26,300 lm	125
HBDBM5H00xH	215	347-480 Vac	5000	>80	100°	31,000 lm	144
HBDBO5H00x	260	120-277 Vac	5000	>80	100°	41,000 lm	158

• Other CCT Available: 4000K • Mounting: Hook, Wall Mount and Pedant • Weight: 8.5~9Kg (18.7~19.8lbs)

## ► Accessories

